



केवल मूल्यांकनकर्ता के उपयोग हेतु!

माध्यमिक शिक्षा मण्डल, मध्यप्रदेश, भोपाल

32 पृष्ठीय

केवल परीक्षक द्वारा भरा जावे। प्रश्न क्रमांक के सम्मुख प्राप्तांकों की प्रविष्टि करे।

प्रश्न क्रमांक	पृष्ठ क्रमांक	प्राप्तांक (अंकों में)	प्रश्न क्रमांक	पृष्ठ क्रमांक	प्राप्तांक (अंकों में)
1			17		
2			18		
3			19		
4			20		
5			21		
6			22		
7			23		
8			24		
9			25		
10			26		
11			27		
12			28		
13					
14					
15					
16					

कुल प्राप्तांक शब्दों में

कुल प्राप्तांक अंकों में

परीक्षक एवं उपमुख्य परीक्षक

परीक्षक एवं उपमुख्य परीक्षक द्वारा भरा जावे

प्रमाणित किया जाता है कि अन्दर के पृष्ठों के अनुरूप मुख्य पृष्ठ पर अंकों की प्रविष्टि एवं अंकों का योग सही है।

निर्धारित मुद्रा : नाम, पदनाम, मोबाईल नंबर, परीक्षक क्रमांक एवं पदांकित संस्था के नाम की मुद्रा लगाएं।

उप मुख

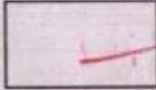
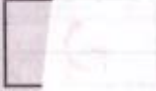

रित म

परीक्षक के हस्ताक्षर एवं निर्धारित

GOV
ML
S. SCHOOL
07779797

Rashmi
07779797

2

 +  = 

योग पूर्व पृष्ठ

पृष्ठ



प्रश्न क्र.

Question No. 01

Choose the correct options:-

Ans (i):- Applying coating of zinc.

Ans (ii):- Ketone

Ans (iii):- Mitochondria

Ans (iv):- Synapse

Ans (v):- Displacement reaction

Ans (vi):- Antacid

www.oddindia.com

11005150



प्रश्न क्र.

Question No. 02

Fill in the blanks:-

Ans (i) :- | increases

Ans (ii) :- | environmental

Ans (iii) :- | 25 cm

Ans (iv) :- | blue

Ans (v) :- | Watt (W)

Ans (vi) :- | voltmeter



प्रश्न क्र.

Question No. 03

True or False :-

Ans (i) :- False ✓

Ans (ii) :- True ✓

Ans (iii) :- True ✓

Ans (iv) :- False ✓

Ans (v) :- False ✓

Ans (vi) :- True ✓



प्रश्न क्र.

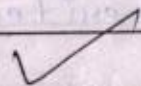
Question No-04

Match the column:-

(A)

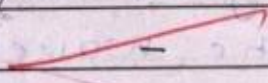
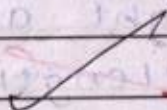
(B)

(i) Insulin



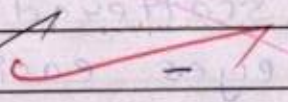
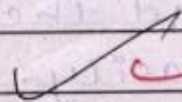
Regulates blood sugar level

(ii) Marble



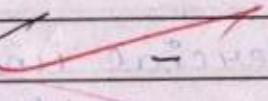
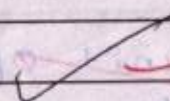
CaCO₃

(iii) Vinegar



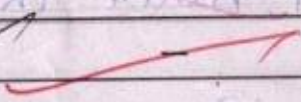
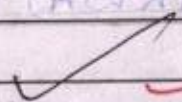
Acetic acid

(iv) Bromine



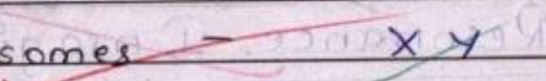
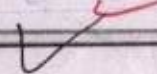
Liquid non-metal

(v) Benzene



C₆H₆

(vi) Pair of sex chromosomes



X Y



प्रश्न क्र.

Question No. 05

One word / sentence :-

Ans (i):- Gregor Johann Mendel worked out the main rules of inheritance.

Ans (ii):- Danger signal light are red in colour because the wavelength of red colour is maximum so, it is scattered the least. As a result, it reaches to the eyes easily.

Ans (iii):- The commercial unit of electric energy is Kilowatt hour (kWh) (Kwh)

Ans (iv):- The full form of M.R.I is Magnetic Resonance Imaging

Ans (v):- Blood Pressure:-

The pressure created by the blood against the walls of the blood

7

$$9 + 5 = 34$$



प्रश्न क्र.

vessels is called as blood pressure

Ans (vi):- Auxin hormone helps in the growth of the stem

Question No. 06

Ans: The refractive index of diamond is 2.42. It means that the speed of light in diamond is $\frac{1}{2.42}$ times the speed of light in vacuum.

Or in other words, the speed of light in vacuum is $2.42 \times$ speed of light in diamond.

Question No. 07

Ans: The planets are not so far from us. The light rays coming from them do not have to pass the different layers of atmosphere. Therefore, the planets

B
S
E

8

34 - 30 = 4



प्रश्न क्र.

do not twinkle because of no scattering of light.

Question No. 08
'Or'

B
S
E

Ans: Two factors upon which resistance of a conductor depends are:

(i) Length of a conductor :-

The resistance of a conductor is directly proportional to its length.

i.e., $L \propto R$

(ii) the area of cross-section :-

The resistance of a conductor is inversely proportional to its area of cross-section.

i.e., $L \propto \frac{1}{A}$

6 + 4 = 40



प्रश्न क्र.

Question No. 09

Ans: The curd and other sour substances contain acids which react with copper and zinc in brass vessels and with copper in copper vessels forming poisonous salts of copper and zinc. Therefore, curd and other sour substances should not be kept in brass and copper vessels.

S
E

Question No. 10

'Or'

Ans:

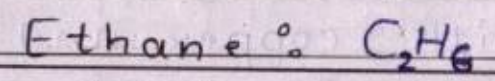
Two uses of Baking soda (NaHCO_3) are:-

- (i) It is used for making baking powder used in bakeries.
- (ii) It is used as an antacid to neutralise excess of acid in our stomach.

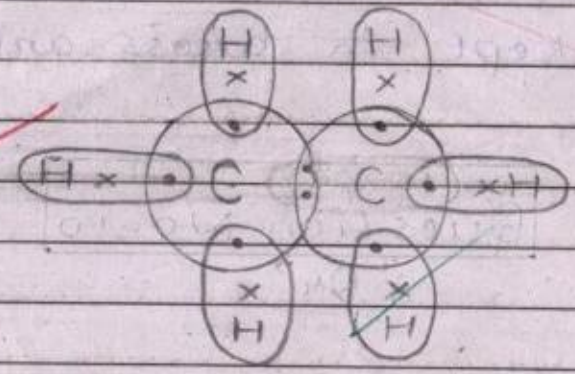


Question No. 11

Ans:-



Electron-dot structure:



Question No. 12

Ans:- Denatured alcohol:

The alcohol is dyed blue for distinguishing it. This type of dyed or coloured alcohol is called 'denatured alcohol'.
 Also known as tincture alcohol.

B
S
E

Question No. 13

Ans:- Life processes :-

The various processes involved in the maintenance job of body are called 'life processes'.

Example :-

nutrition, respiration, transportation, excretion, etc.

B
S
E

Question No. 14

Ans:- Some plants have the capacity to grow from their vegetative parts such as roots, stems, or leaves, etc. It is known as vegetative propagation.

It is helpful in growing such plants which do not have the capacity to produce seeds. The flowers and fruits come out early and they are genetically similar to their parents. Therefore, it is useful in growing some plants. Example, rose by stem, Bryophyllum by leaves, etc.

48



प्रश्न क्र.

Question No. 15

Ans:- Nourishment of embryo inside a mother's body:

The embryo gets nourishment inside the mother's body through a special tissue called placenta. It is a disc-like structure embedded in the uterus wall of mother having villi in present in the embryo's side and blood spaces on the mother's side covering the villi. It helps in transporting glucose, oxygen and other useful nutrients from mother's blood and excreting out the waste generated by the embryo.

B
S
E

Handwritten marks and scribbles on the left margin.

50 + 2 = 52
पृष्ठ 13 के अंक कुल अंक



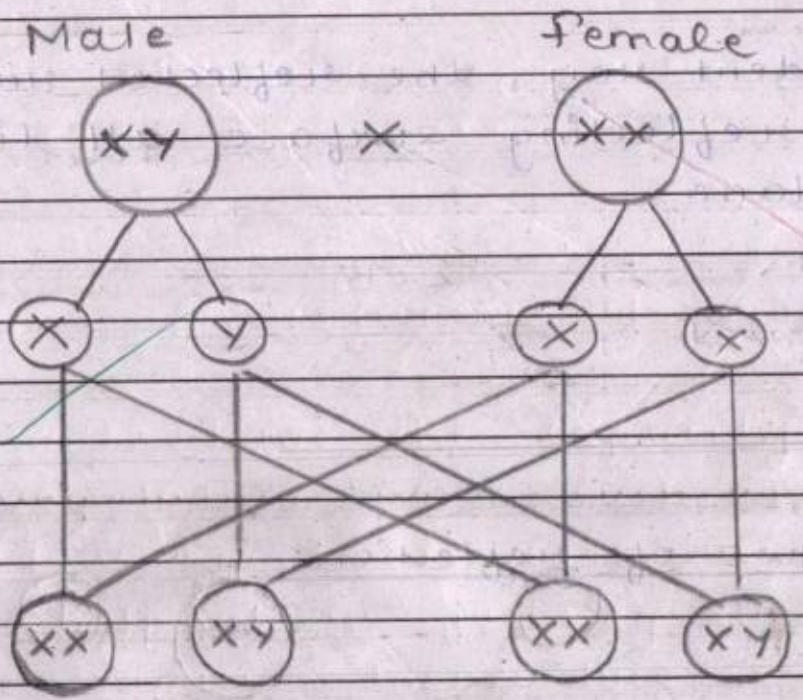
प्रश्न क्र.

Question No. 16

Ans: Sex is determined in human beings by the 23rd pair of chromosomes called the sex-chromosomes.

Linear diagram:

B
S
E



Sex determination in humans



प्रश्न क्र.

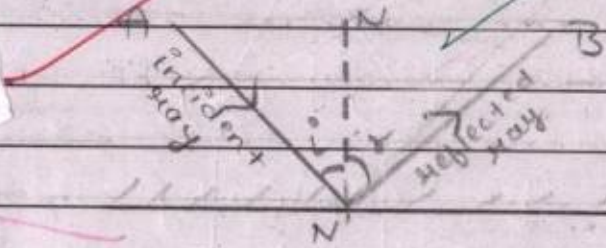
Question No. 17

Ans:- The laws of reflection are:

(i) The angle of incidence is always equal to the angle of reflection ($\angle i = \angle r$)

(ii) The incident ray, the reflected ray and normal to the reflecting surface all lie on the same plane.

B
S
E



Laws of reflection

here,

NN' = normal

AN = incident ray

BN = reflected ray



प्रश्न क्र.

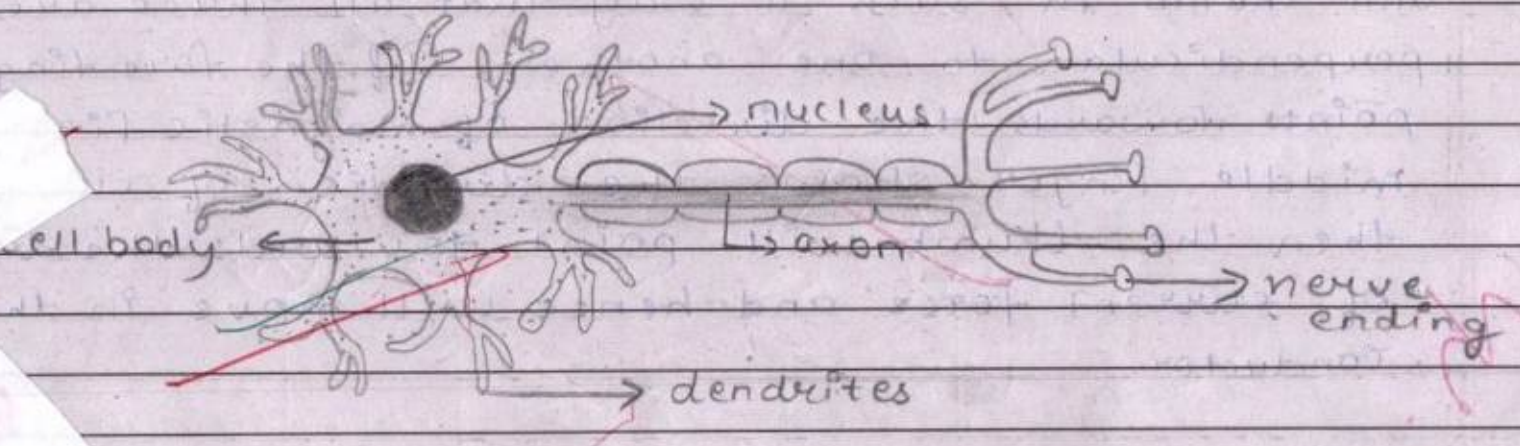
$\angle i =$ angle of incidence

$\angle r =$ angle of reflection

$\angle i = \angle r$

Question No. 18

B
S
E



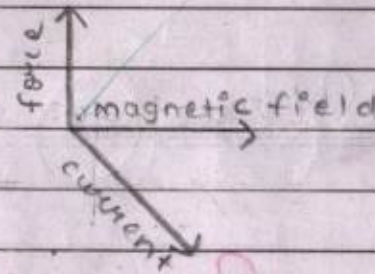
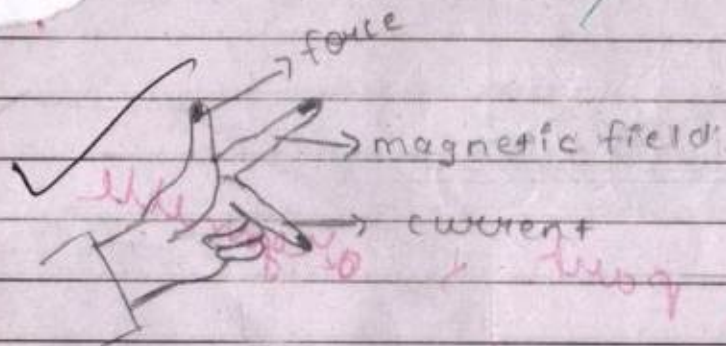
Structure of Neuron

Question No. 19

'Or'

Ans:- Fleming's left hand rule:

It is used to determine the direction of Lorentz's force. According to it, "stretch the fore finger, middle finger and thumb in such a way that all three are perpendicular to one another. If the fore finger points towards the direction of magnetic field and middle finger shows the direction of current, then the thumb will point towards the direction of current force and hence will move in the conductor.



Fleming's left hand rule

प्रश्न क्र.

Question No. 20

Ans:

- (i) liquid at ~~room temp.~~ = mercury (Hg)
- (ii) can be ~~easily cut~~ with a knife = Sodium
- (iii) best conductor ~~of heat~~ = silver (Ag) and copper (Cu)

B
S
E

Question No. 22

OrSolution:-

given,

$$\text{object size } (h_o) = 4 \text{ cm}$$

$$\text{distance of object } (-u) = -25 \text{ cm}$$

$$\text{focal length } (f) = -15 \text{ cm}$$

$$\text{distance of image } (v) = ?$$

$$\text{size of image } (h_i) = ?$$

$$\left[\frac{63}{20} + \frac{2}{20} \right] = \frac{65}{20}$$

योग पूर्व पृष्ठ कुल अंक



by mirror formula,

$$\frac{1}{f} = \frac{1}{v} + \frac{1}{u}$$

~~$$\frac{1}{-15} = \frac{1}{v} + \frac{1}{(-25)}$$~~

~~$$\frac{1}{-15} = \frac{1}{v} - \frac{1}{25}$$~~

~~$$\frac{1}{-15} + \frac{1}{25} = \frac{1}{v}$$~~

~~$$\frac{-5 + 3}{75} = \frac{1}{v}$$~~

~~$$\frac{-2}{75} = \frac{1}{v}$$~~

~~$$-2v = 1 \times 75$$~~

~~$$-2v = 75$$~~

~~$$v = \frac{75}{-2}$$~~

$$v = -37.5$$

19

$\frac{1}{2} + \frac{1}{-25} = \frac{1}{v}$
 योग पूर्व पृष्ठ कुल अंक



प्रश्न क्र.

Again,
We know that,

$$\text{Magnification} = \frac{-v}{u}$$

$$m = \frac{-v}{u}$$

$$\frac{h_i}{h_o} = \frac{-v}{u}$$

By formula,
 $m = h_i/h_o$

$$\frac{h_i}{4} = \frac{-(-37.5)}{-25}$$

$$\frac{h_i}{4} = \frac{+37.5}{-25}$$

$$\frac{h_i}{4} = \frac{37.5 \times 5 + 5 \times 3}{-25 \times 10}$$

$$\frac{h_i}{4} = \frac{3}{-2}$$

$$h_i = \frac{3 \times 4 \times 2}{-2}$$

$$h_i = \frac{3 \times 2}{-1}$$

B
S
E

$$h' = -6 \text{ cm}$$

Again,

$$m = \frac{-v}{u}$$

$$m = \frac{-(-37.5)}{-25}$$

$$m = \frac{+37.5}{-25}$$

$$m = \frac{37.5}{-25 \times 10^2}$$

$$m = \frac{-3}{25}$$

$$m = -1.5$$

\Rightarrow the (-ve) sign shows that the image is inverted and formed in front of mirror.

nature of image = • real
• inverted

size of image (h_i) = 6 cm

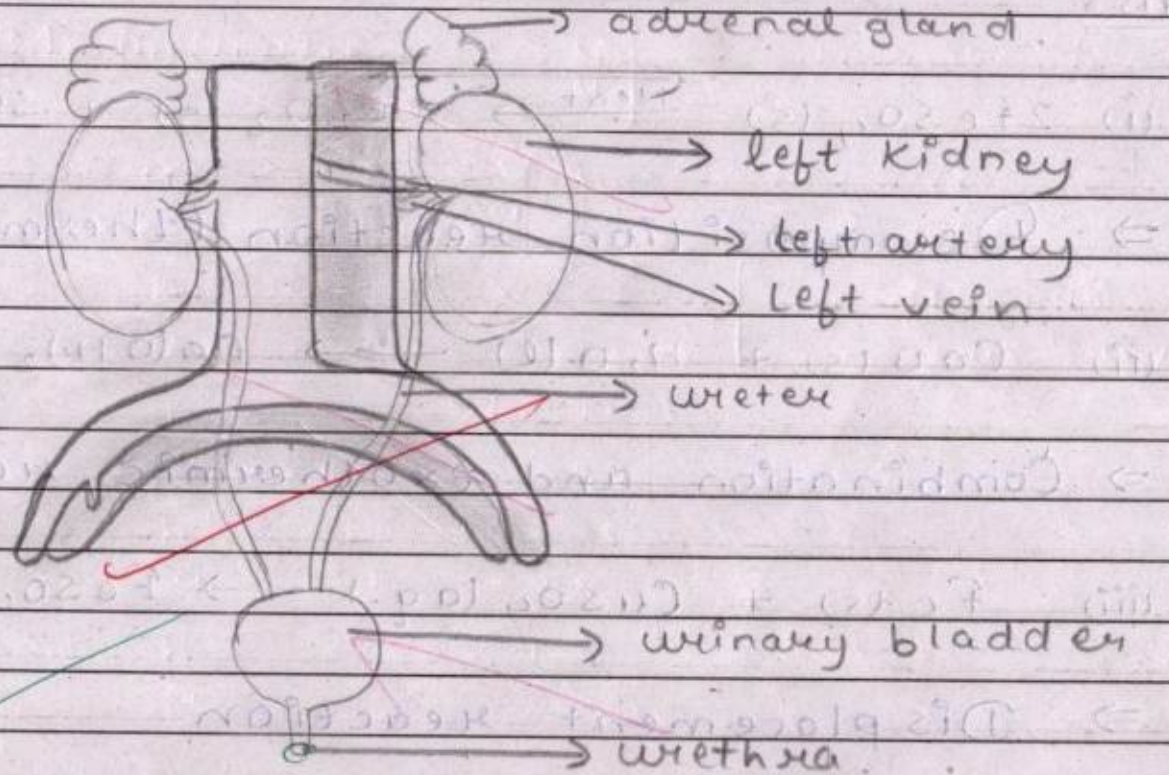
Ans.

प्रश्न क्र.

Question No. 21

'or'

B
S
E



EXCRETORY SYSTEM IN HUMANS

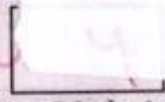


22



योग पूर्व पृष्ठ

+



पृष्ठ 22 के अंक

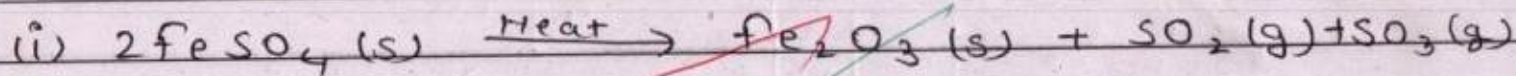
=



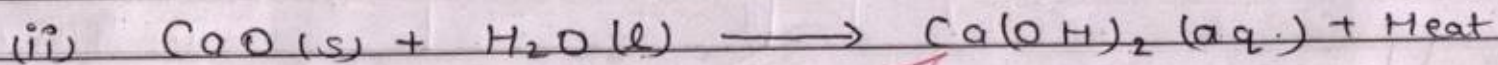
कुल अंक

Question No. 23

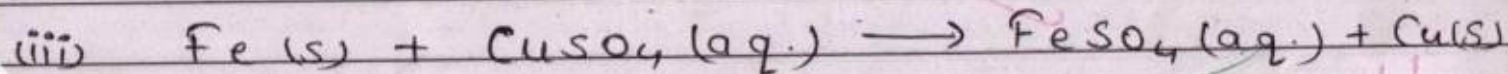
Ans:



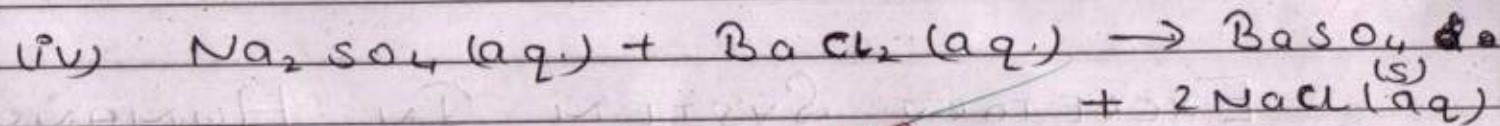
⇒ Decomposition reaction (thermal decomposition)



⇒ Combination and exothermic reactions



⇒ Displacement reaction



⇒ Double-displacement reaction and precipitation reaction.